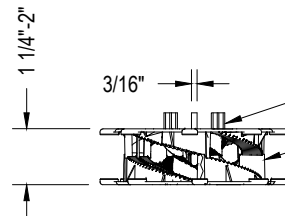


PLAN VIEW

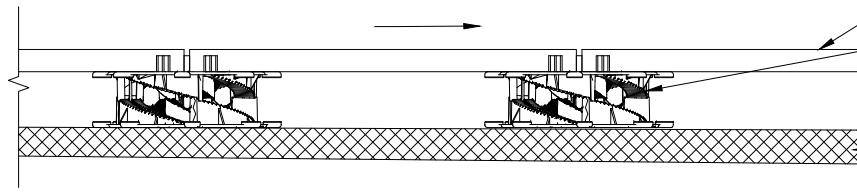


FRONT ELEVATION
SD-S WITH TOP PLATE

REMOVABLE SPACER TABS

SKYJACK SD-S
ADJUSTABLE SPIRAL
PAVER PEDESTAL

FOR SLOPES GREATER THAN 1/4" PER FOOT, ADD
SD-XL-SLH SELF-LEVELING HEADS TO COMPENSATE
FOR SLOPES UP TO 7%



CONCRETE PAVERS, IPE
DECK TILES, TURF,
PLANTERS OR PORCELAIN

SKYJACK SD-S ADJUSTABLE
SPIRAL PAVER PEDESTAL

ROOF ASSEMBLY

INSTALLATION DETAIL
TYPICAL PEDESTAL APPLICATION

SPECIFICATIONS

NOTES:

MATERIAL

FULLY RECYCLABLE HIGH DENSITY
COPOLYMER POLY PROPYLENE (HDCPP)

- **BOX CONTENTS:** ONE FULLY ASSEMBLED SD-S ADJUSTABLE PAVER PEDESTAL WITH 3/16" GAP SPACERS*. UP TO 125 PCS PER BOX.
* 1/8" GAP SPACERS ARE AVAILABLE UPON REQUEST

TEMP. RANGE

-20 - 200 DEGREES FAHRENHEIT

WEIGHT CAPACITY

2,150 LBS PER PEDESTAL

ADJUSTABLE PAVER PEDESTAL

SKYJACK: SPIRAL PEDESTAL SD-S (1 1/4"-2")

DWG. NO.
SHEET

DATE: 6/20/25
BY:

